

ESCALATOR & TRAVELATOR



the NEW
Escalator
Travelator
Series

EITA-Schneider



EITA®

brings good feel to life

1st MALAYSIAN public listed ELEVATOR company

At EITA Elevator, we are proud of our homegrown brand and will continue to strive to innovate and improve our products.

We are proud to announce EITA Resources Berhad's successful listing on the Main Board of Kuala Lumpur Stock Exchange (KLSE) on 9th April 2012.

As a subsidiary, EITA Elevator (Malaysia) Sdn Bhd takes great pride in being the first homegrown elevator company to be listed on KLSE and marketed under our very own brand name.

EITA Elevator markets, designs, manufactures, installs, commissions, services and modernizes a wide range of elevators, escalators and travelators - your one-stop solution provider.

EITA Elevator has built a strong track record and reputation in our local Malaysian market and we have also expanded our market coverage to various countries in the ASEAN region and the Middle East.

Since our very first project, we have grown from strength to strength and now have many successful installations in government complexes, commercial buildings, education campuses, hospitals, transportation hubs, shopping centres, hotels, condominiums, home lifts and many more.

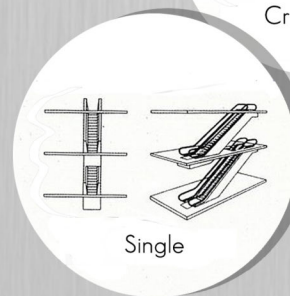
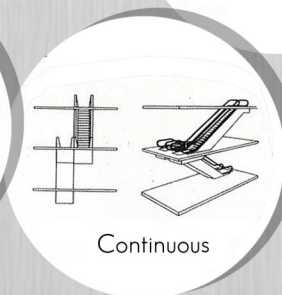
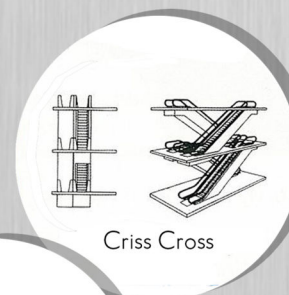
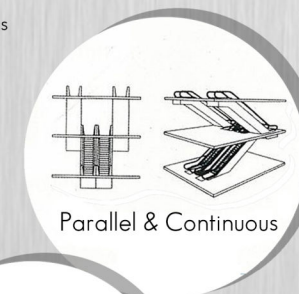
We have also adopted Green Technology to be more environmental friendly and to help our customers save cost, especially in the areas of energy efficient equipment and regenerative solutions.

CONFIGURE & DESIGN to your NEEDS

Customers can choose from a broad array of designs to optimize traffic flow and enhance the building's aesthetics.

We offer a wide range of configuration layouts and design options to complement your building's architecture, may it be indoors or outdoors.

From hand-rails of ultra-slim design for modern image and more secure hand holding during the ride, to durable stainless steel steps, landing plates, decking and others.



Take your NEXT STEP with EITA

At EITA Elevator, we offer a variety of escalators & travelators, each designed to suit the traffic and to move people safely.



ESC-CT Series: Common Traffic Escalator

Our ESC-CT escalators are designed to complement the individual image and aesthetics of the buildings. The tempered glass balustrades (10 mm thick) gives the escalator a clean and stylish look.

Our modular design provides the flexibility to integrate a wide range of diverse functions to meet the specific needs of different clients. This ESC-Common Model is manufactured strictly according to the EN 115 European standard.

Rise: 1.5 - 6.0 m
Gradient: 30°, 35°
Step width: 600, 800, 1000 mm
Horizontal steps: 2, 3 flat steps
Speed: 0.5 m/s
Capacity: 3600, 4800, 6000 people/hour
Note:
 Type: Indoor, Semi-outdoor, Outdoor
 Power supply: 3 Phase of 415 V / 50 Hz
 Lighting power: Single Phase of 240 V / 50 Hz



ESC-PT Series: Public Traffic Escalator

These ESC-PT escalators are most suited for public areas with sizeable traffic, especially shopping complexes. They are appropriate for both indoor and outdoor applications.

It is designed with durability in mind, with stainless steel for its steps, landing board, skirt board and decking.

Rise: 6.0 - 16.0 m
Gradient: 30°
Step width: 800, 1000 mm
Horizontal steps: 2, 3 flat steps
Speed: 0.5 m/s
Capacity: 4800, 6000 people/hour
Note:
 Type: Indoor, Semi-outdoor, Outdoor
 Power supply: 3 Phase of 415 V / 50 Hz
 Lighting power: Single Phase of 240 V / 50 Hz



ESC-HD Series: Heavy Duty Escalator

ESC-HD series is your choice for busy transport hubs like bus and train stations. Our ESC-HD escalator is powered by a robust drive system to work around the clock and endure constant heavy traffic loads.

The stainless steel balustrade option provides for greater durability and ease of maintenance.

Rise: 6.0 - 16.0 m
Gradient: 30°
Step width: 800, 1000 mm
Horizontal steps: 4 flat steps
Capacity & Speed: 4800 - 6000 people/hour (0.5 m/s)
 5900 - 7300 people/hour (0.65 m/s)
 9000 people/hour (0.75 m/s, 1000mm)

Note:
 Type: Indoor, Semi-outdoor, Outdoor
 Power supply: 3 Phase of 415 V / 50 Hz
 Lighting power: Single Phase of 240 V / 50 Hz



TRV Series: Travelator or Moving Walk

Travelators or moving walks under our TRV Series are ideal for shopping malls and transport hubs. They are most suitable for shopping and luggage carts, baby carriages, wheelchairs and others.

These travelators are available in various configurations attractively designed to complement your architectural style.

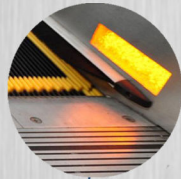
Rise: 1.0 - 6.0 m
Gradient: 10°, 11°, 12°
Step width: 800, 1000 mm
Speed: 0.5 m/s
Capacity: 4800, 6000 people/hour
Note:
 Type: Indoor, Semi-outdoor, Outdoor
 Power supply: 3 Phase of 415 V / 50 Hz
 Lighting power: Single Phase of 240 V / 50 Hz



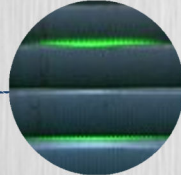
WIDE CHOICE of DESIGNS & SAFETY features



Balustrade
The vertical glass balustrade design gives it a classy and stylish appearance, whereas an inclined stainless steel balustrade presents sturdy attractiveness.



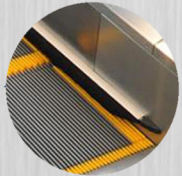
Comb Lighting
The comb lighting provides additional safety for the passengers as they step onto the escalator.



Step Lighting
The step lighting provides greater visibility and safety for the users while they are on the escalator.



Rammed skirt board
The rammed stainless steel skirt board and inclined cover board fit together perfectly to form a smooth plane, thus eliminating the danger of possible hooking.



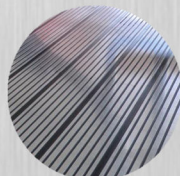
Skirt Brush
Skirt brushes are to prevent entrapment of foreign objects and feet between the skirt guard and steps. It is a highly recommended safety option.



Handrail
It comes in standard black with other colour options. It has a sturdy feel and is robustly made from sulfurized rubber ring-belt reinforced with wire-chain.



External Cladding
Besides standard hairline stainless steel, a wide range of other external cladding options are available to match the building's aesthetics.



Landing Board
The landing board is made from rammed stainless steel with anti-slip groove designs.



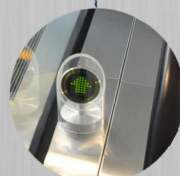
Step
The steps made from die-cast aluminium provides greater strength and durability, with no distortion even after long periods of usage under heavy loads, plus an added ability to withstand corrosion. It also has a yellow polycarbonate safety border. Also available in stainless steel.



Wedge
The wedge provides an attractive wedge finish at the end of the escalator balustrades.



Sensor
This is one of our "Go Green" energy saving features. When no passenger traffic is detected by the photocell sensors, the escalator stops, thus reducing energy consumption.



Directional Indicator
The lighted arrow and No-Entry sign clearly indicates the directional movement of the escalator to the user.

EXCELLENCE in ENGINEERING & SERVICES

We continue to strive for excellence in our products & services to exceed our customers' expectations.

Service excellence

We also pride ourselves in having a committed and competent Service Team.

Our Service Team is ever ready to ensure our elevators, escalators and travelators are properly maintained and in good working condition to meet our customers' expectations.

We have a 24 hour Hotline Centre with technicians on constant standby and dedicated to attending to any ad hoc breakdowns.

We have consistently met our target of 30 minutes response time to breakdown calls to further reinforce our service commitments.

Dedicated R & D

Our own dedicated R & D Center and engineers continuously undertake research and development to upgrade and innovate our range of products to meet international standards and demanding customer requirements.

In-house production

Being a local manufacturer, we are in control of our production process concerning quality and quantity of our own equipment and components. This also gives the added benefit of faster delivery lead time.

Modular design

Our equipment is designed to be modular to facilitate faster and flexible installation. Ultimately, this ensures delivery of our projects on time.

ISO 9001 certification

We have been awarded the internationally recognized ISO 9001 certification for our business operations.

TUV certification

We also have been accredited product-based certification from TUV SUB PSB, a testament to our product quality and reliability.

Safety certification

Safety is paramount to our customers and employees in ensuring peace of mind. As such, EITA Elevator is OSHA certified in all aspects of project implementation.



Go GREEN with ENERGY EFFICIENCY

We are committed towards a greener environment through product innovations and improved manufacturing processes.

Environmental responsibility

We have adopted "Towards Eco Friendly" initiatives to play our part in saving the environment

With our green mind set, our R&D efforts are geared towards improving our products and developing new innovations in providing energy efficient solutions, improving escalator operations and ultimately, imparting cost savings for our customers.

Variable Voltage, Variable Frequency (VVVF) Drive

This optional VVVF Drive feature provides variable speed control of the motor which allows the escalator to run at low speed during zero load and automatically return to normal speed during higher passenger load.

This VVVF Drive system optimizes power consumption based on human traffic and can save energy up to 60%.

Auto-Start Photocell sensors

The sensors detect movement and switches ON automatically to activate the escalators and employs a delayed switch OFF when nobody is on the escalator, hence, providing additional energy saving measures.

Micro-controller Unit

It consists of processor core, memory and programmable Input/Output peripherals. It allows for ease of configuration to automatically control and optimize the escalator operations.



SATISFIED LOCAL & INTERNATIONAL clientele

Our satisfied customer base is ever expanding as we earn their trust and loyalty.



Encorp Strand Mall
Kuala Lumpur, Malaysia.



The Shore
Malacca, Malaysia.



GM Klang Wholesale Centre
Selangor, Malaysia.



Calvary Convention Centre
Kuala Lumpur, Malaysia.



Condominium M3
Kuala Lumpur, Malaysia.



MSU Campus
Selangor, Malaysia.



First Subang
Selangor, Malaysia.



Kuching Sentral Terminal
Sarawak, Malaysia.



Talat Sao Mall
Vientiane, Laos.

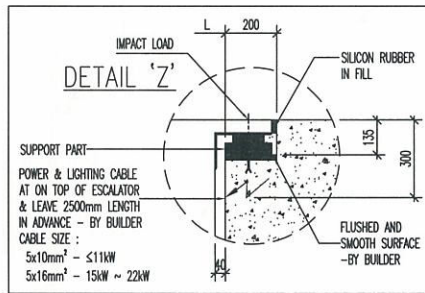
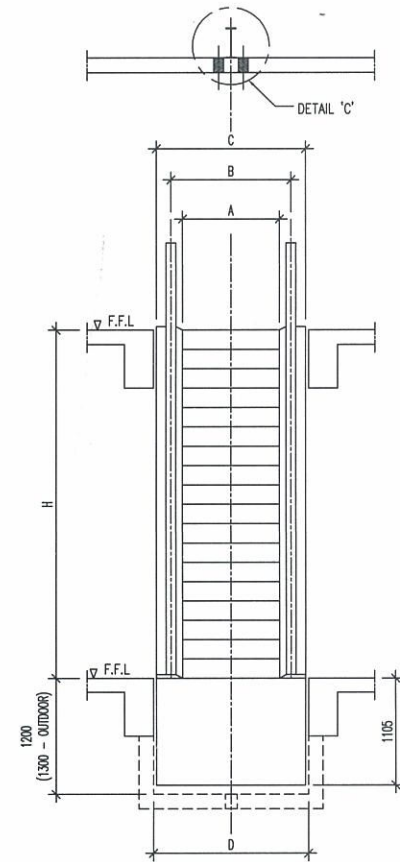
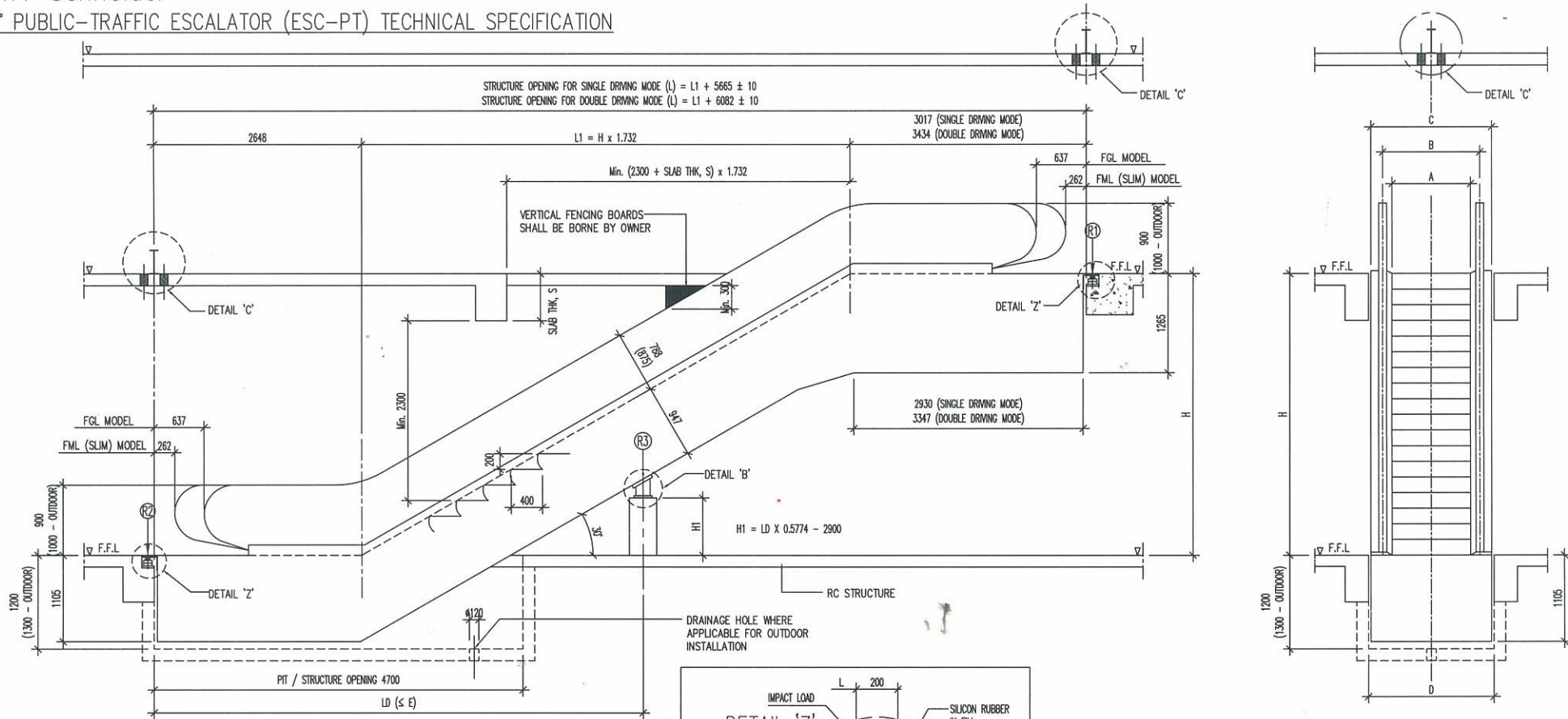


Liana's Supermarket
Manila, Philippines.



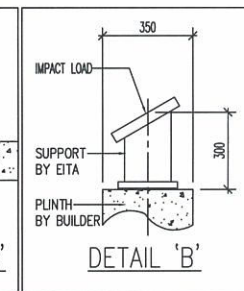
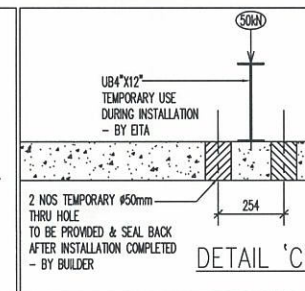
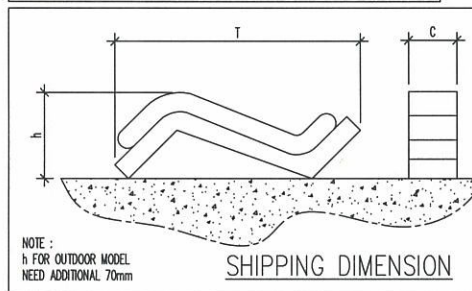
EITA-Schneider

30° PUBLIC-TRAFFIC ESCALATOR (ESC-PT) TECHNICAL SPECIFICATION



MODEL	A	B	C	D	E
FGL30-800	800	1038	1340	1400	16900
FGL30-1000	1000	1238	1540	1600	15700

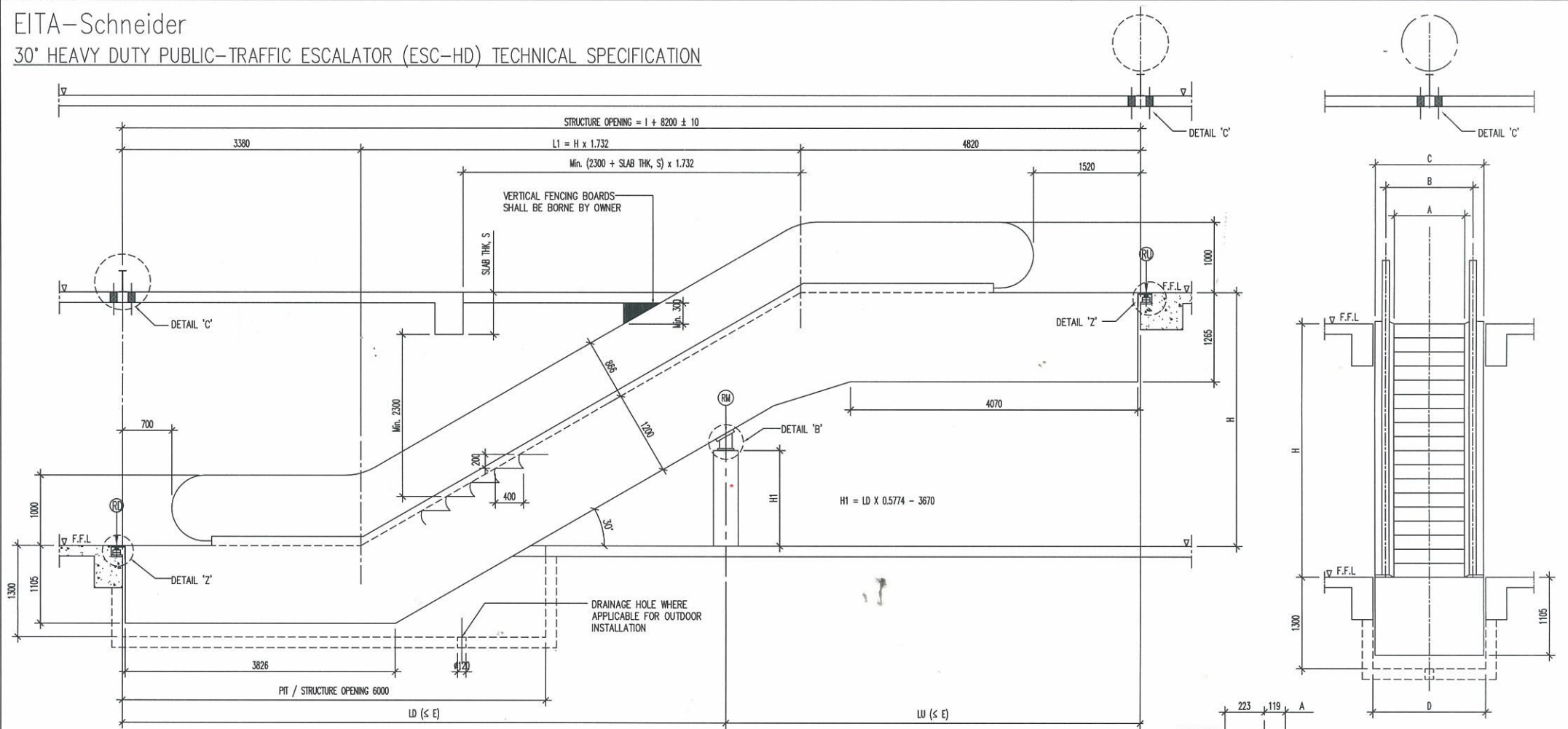
NOTE: E DENOTES THE MAXIMUM DISTANCE BETWEEN TWO SUPPORTING POINTS



TRAVELLING HEIGHT (mm)	MODEL	FGL30-800 (4800 PEOPLE/HOUR)			FGL30-1000 (6000 PEOPLE/HOUR)			SHIPPING DIMENSION	STRUCTURE OPENING SINGLE DRIVING	STRUCTURE OPENING DOUBLE DRIVING					
		NET WEIGHT (kN)	SUPPORTING LOAD (kN)			NET WEIGHT (kN)	SUPPORTING LOAD (kN)				h	T			
		R1	R2	R3	MOTOR POWER (kW)	R1	R2	R3	MOTOR POWER (kW)						
6000	75	45	37	93	11	107	51	43	107	15	3290	17780	16057		
6500	83	47	39	98	11	111	53	45	113	15	3300	18750	16923		
7000	87	49	41	103	11	116	56	48	119	15	3320	19700	17789		
7500	92	51	43	108	15	120	58	50	124	15	3330	20750	18655		
8000	97	53	45	113	15	125	60	52	130	18.5	3340	21740	19521		
8500	103	55	47	118	15	129	62	54	135	18.5	3350	22740	20387		
9000	110	57	49	123	15	134	69	58	144	11 x 2	3510	24110		21670	
9500	116	59	51	128	15	139	71	60	149	11 x 2	3530	25110		22536	
10000	122	61	53	133	18.5	143	73	62	154	11 x 2	3540	26100		23402	
		FGL30-800 (6750 PEOPLE/HOUR)			FGL30-1000 (9000 PEOPLE/HOUR)										
10500	142	66	55	137	11 x 2	161	77	64	158	11 x 2	3700	27800		24268	
11000	156	68	57	143	11 x 2	176	79	66	165	15 x 2	3710	28800		25134	
11500	170	70	59	148	11 x 2	190	81	68	170	15 x 2	3720	29800		26000	
12000	185	72	61	152	11 x 2	205	83	70	176	15 x 2	3730	30800		26866	
12500	199	74	63	157	11 x 2	219	86	73	181	15 x 2	3740	31800		27732	
13000	214	76	65	163	15 x 2	233	88	75	187	15 x 2	3750	32800		28598	
13500	228	78	67	167	15 x 2	248	90	77	193	15 x 2	3760	33800		29464	
14000	242	82	69	172	15 x 2	263	93	80	199	15 x 2	3780	34800		30330	
14500	257	84	71	177	15 x 2	278	97	82	204	18.5 x 2	3790	35800		31196	
15000	271	86	73	182	15 x 2	292	99	84	210	18.5 x 2	3800	36800		32062	

EITA-Schneider

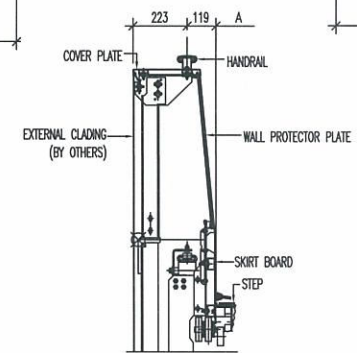
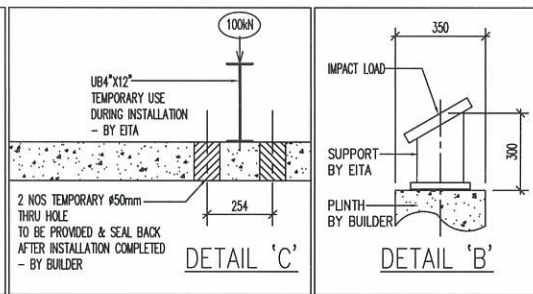
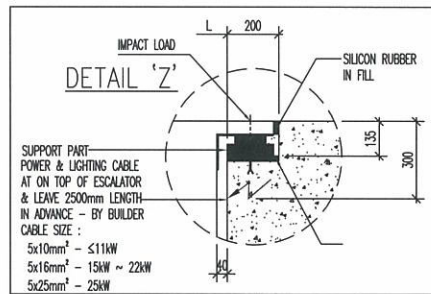
30° HEAVY DUTY PUBLIC-TRAFFIC ESCALATOR (ESC-HD) TECHNICAL SPECIFICATION



STEEP WIDTH (mm)	RU (kN)	RM (kN)	RD (kN)
800	4.1LU + 16	6.2L + 3	4.1LD + 4
1000	4.6LU + 16	7L + 3	4.6LD + 4

MODEL	A	B	C	D	E
FZL30-800	800	1038	1340	1400	24900
FZL30-1000	1000	1238	1640	1700	21600

NOTE: E DENOTES THE MAXIMUM DISTANCE BETWEEN TWO SUPPORTING POINTS



SECTION OF HANDRAIL AND WALL PROTECTOR PLATE

MODEL	FZL30-800				FZL30-1000							
	(4800 PEOPLE/HOUR)	(5900 PEOPLE/HOUR)	(6000 PEOPLE/HOUR)	(7300 PEOPLE/HOUR)	(9000 PEOPLE/HOUR)							
SPEED (m/s)	0.5		0.65		0.5		0.65		0.75			
TRAVELLING HEIGHT (mm)	16000	15500	16000	16000	13000	16000	5668	7167	9667	11830	12210	16000
MOTOR KW	15 X 2	15 X 2	18.5 X 2	15 X 2	15 X 2	18.5 X 2	18.5	11 X 2	15 X 2	18.5 X 2	22 X 2	25 X 2

30° HEAVY DUTY PUBLIC TRAFFIC TYPE ESCALATOR CONSTRUCTION LAYOUT



EITA ELEVATOR (MALAYSIA) Sdn. Bhd. (468586-T)

EITA-SCHNEIDER (MFG) Sdn. Bhd. (514664-K)

Lot 4, Block A, Jalan SS 13/7,
Subang Jaya Industrial Estate,
47500 Subang Jaya,
Selangor Darul Ehsan,
Malaysia.

Tel: 603 5621 1899 Fax: 603 5621 1179

Website: www.eitaelevator.com.my



EITA-Schneider